



Karameļu darbnīca

<http://www.karameludarbница.lv>
info@karameludarbница.lv
+371 29851426 +371 29851426
Jelgava, Rogu ceļš 11, LV-3004

Company type
Registration Number
Industry

Turnover (EUR)
Certificates

Limited responsibility company
43603063817
Manufacture of cocoa, chocolate
and sugar confectionery (10.82)
420920.00

CHERRY CANDY



Product group
Confectionery & Cocoa preparations
Product subgroup
Sugar confectionery,
Caramel & Dragee
Product code
1702 90
Product line

Product weight GROSS 100 Gram (g)
Storage terms (days) 270
Storage temperature min (C) -3
Storage temperature max (C) 18
Storage conditions Dry and cool place
Kind of packaging Packaging from composite materials

Ingredients: white sugar, glucose syrup, water, acidity regulator – citric acid, natural food colouring – black carrot extract, vegetable carbon, natural flavouring.

STRAWBERRY LOLLIPOP



Product group
Confectionery & Cocoa preparations
Product subgroup
Sugar confectionery,
Caramel & Dragee
Product code
1702 90
Product line

Product weight GROSS 100 Gram (g)
Storage terms (days) 270
Storage temperature min (C) -3
Storage temperature max (C) 18
Storage conditions Dry and cool place
Kind of packaging Packaging from composite materials

Ingredients: white sugar, glucose syrup, water, acidity regulator – citric acid, natural food colouring – black carrot extract, natural flavouring.

ORANGE CANDY

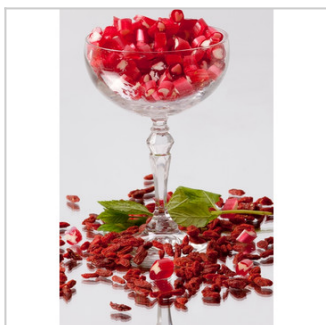


Product group
Confectionery & Cocoa preparations
Product subgroup
Sugar confectionery,
Caramel & Dragee
Product code
1702 90
Product line

Product weight GROSS 100 Gram (g)
Storage terms (days) 270
Storage temperature min (C) -3
Storage temperature max (C) 18
Storage conditions Dry and cool place
Kind of packaging n/a

Ingredients: white sugar, glucose syrup, water, acidity regulator – citric acid, natural food colouring – carrot extract, natural flavouring.

BARBERRY CANDY

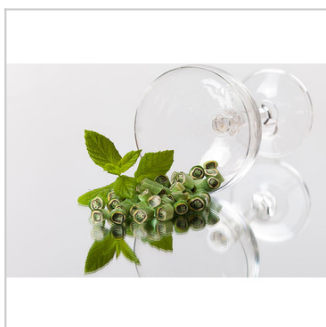


Product group
Confectionery & Cocoa preparations
Product subgroup
Sugar confectionery,
Caramel & Dragee
Product code
1702 90
Product line

Product weight GROSS 100 Gram (g)
Storage terms (days) 270
Storage temperature min (C) -3
Storage temperature max (C) 18
Storage conditions Dry and cool place
Kind of packaging Packaging from composite materials

Ingredients: white sugar, glucose syrup, spring water, acidity regulator – citric acid, natural food colouring – black carrot extract, natural flavouring.

SWEET MINT CANDY



Product group
Confectionery & Cocoa preparations
Product subgroup
Sugar confectionery,
Caramel & Dragee
Product code
1702 90
Product line

Product weight GROSS 100 Gram (g)
Storage terms (days) 270
Storage temperature min (C) -3
Storage temperature max (C) 18
Storage conditions Dry and cool place
Kind of packaging n/a

Ingredients: white sugar, glucose syrup, water, acidity regulator – citric acid, natural food colouring – spinach-nettle extract, vegetable carbon, natural flavouring.